

Forest Park Southeast—July 2018

Comparing June 2017 to July 2018

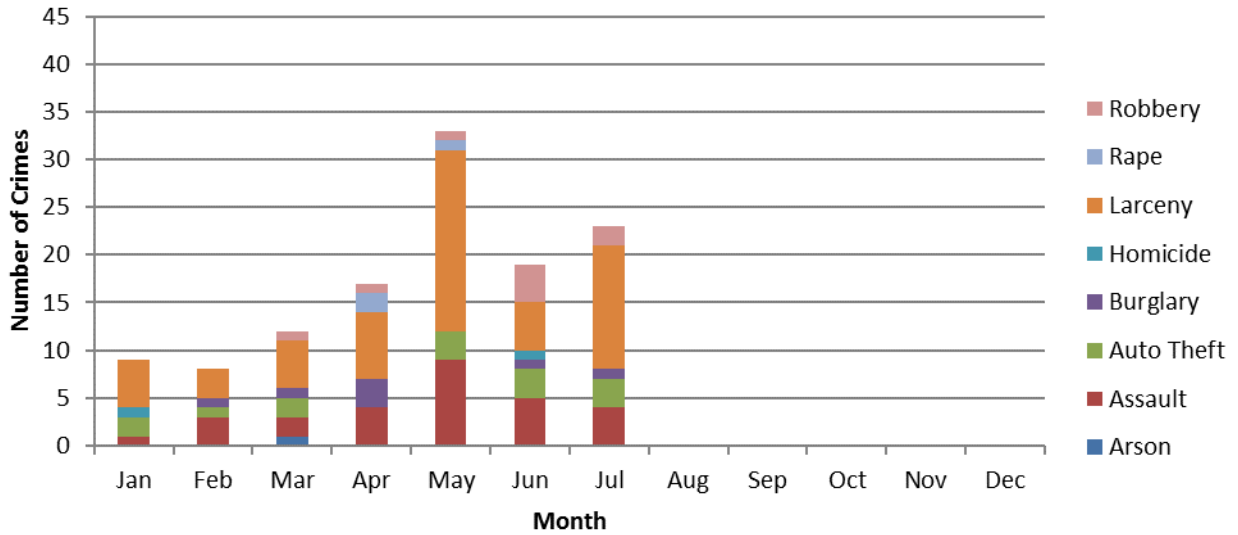
2017		Jan	Feb	Mar	Apr	May	Jun	Jul	Aug	Sep	Oct	Nov	Dec	Year End Total
	Arson	1	0	0	0	0	0	0	0	0	0	0	0	1
	Assault	2	1	3	0	4	2	1	2	1	4	2	3	25
	Auto Theft	4	1	2	4	3	1	4	2	3	4	4	1	33
	Burglary	2	0	1	1	2	0	1	6	0	5	1	3	22
	Homicide	0	0	0	0	0	0	0	0	0	1	0	0	1
	Larceny	8	10	12	3	13	3	16	7	8	18	8	20	126
	Rape	0	0	0	0	0	0	0	0	0	0	0	0	0
	Robbery	0	2	3	1	2	0	2	2	3	3	1	1	20
	Total Crimes	17	14	21	9	24	6	24	19	15	35	16	28	228

2018		Jan	Feb	Mar	Apr	May	Jun	Jul	Aug	Sep	Oct	Nov	Dec	YTD	M/M Change	YTD Change	
	Arson	0	0	1	0	0	0	0							1	-	0.00%
	Assault	1	3	2	4	9	5	4							28	300.00%	115.38%
	Auto Theft	2	1	2	0	3	3	3							14	-25.00%	-26.32%
	Burglary	0	1	1	3	0	1	1							7	0.00%	0.00%
	Homicide	1	0	0	0	0	1	0							2	-	-
	Larceny	5	3	5	7	19	5	13							57	-18.75%	-12.31%
	Rape	0	0	0	2	1	0	0							3	-	-
	Robbery	0	0	1	1	1	4	2							9	0.00%	-10.00%
	Total Crimes	9	8	12	17	33	19	23							121	-4.17%	5.22%

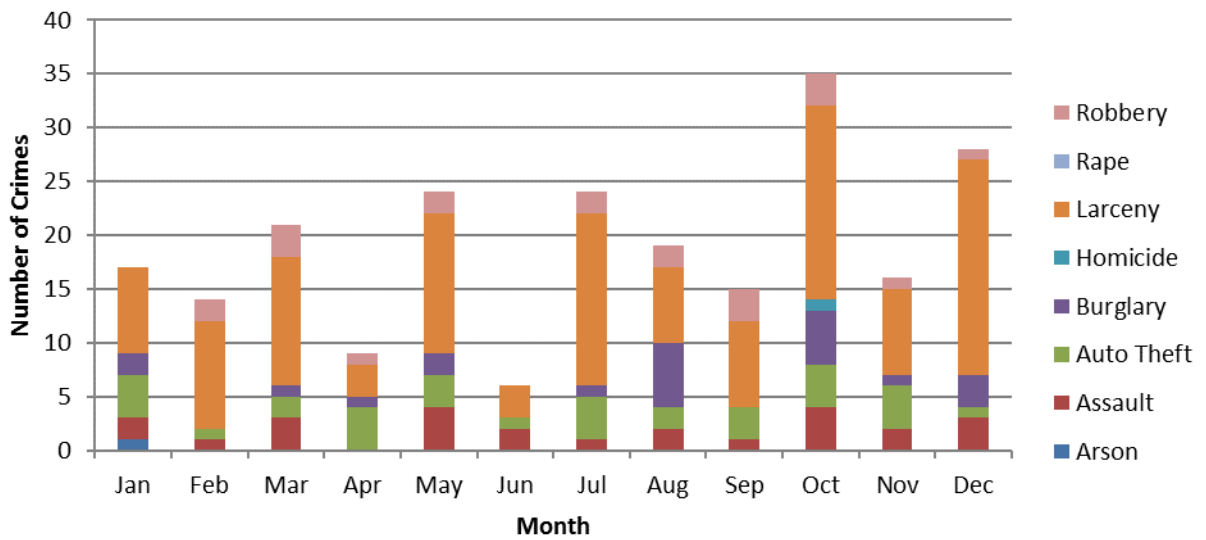
Forest Park Southeast—July 2018

Crime by Month and Category

2018

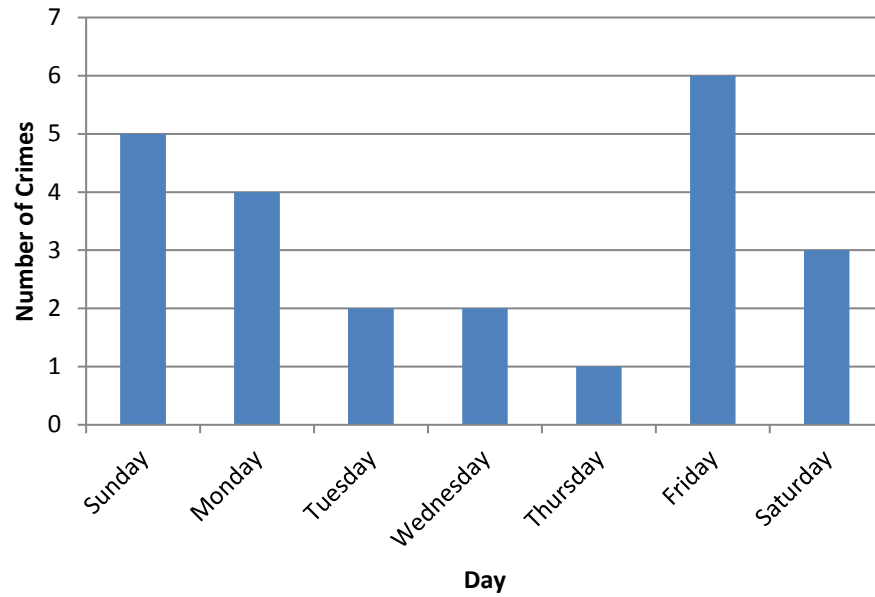


2017



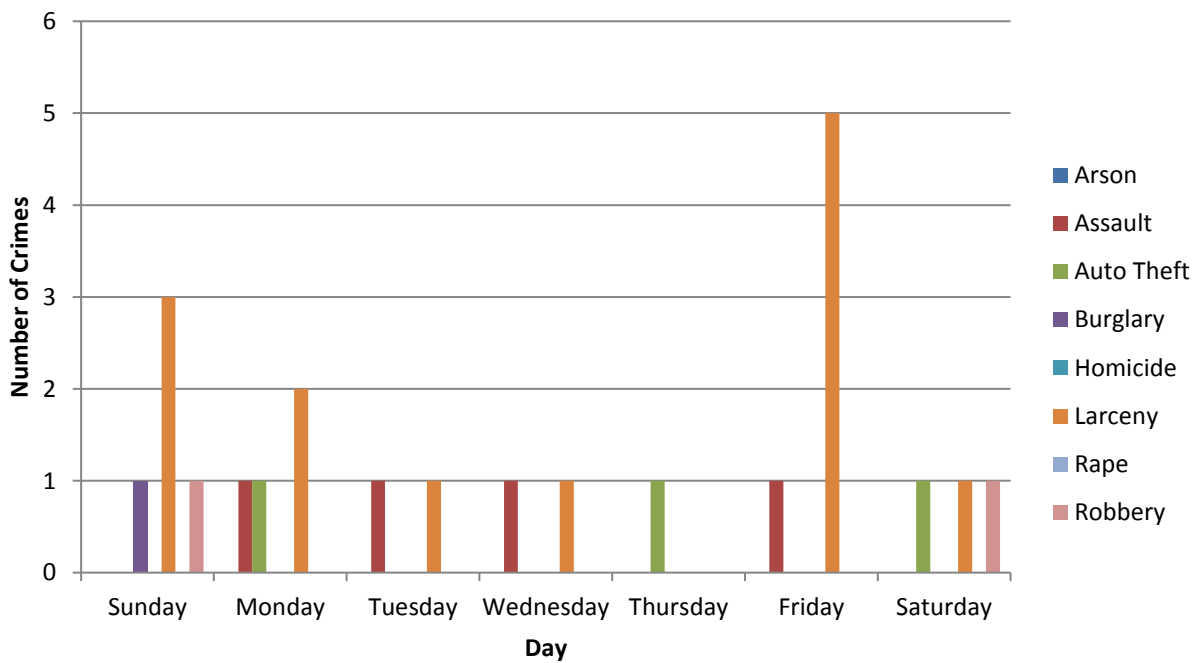
Forest Park Southeast—July 2018

Crime By Day



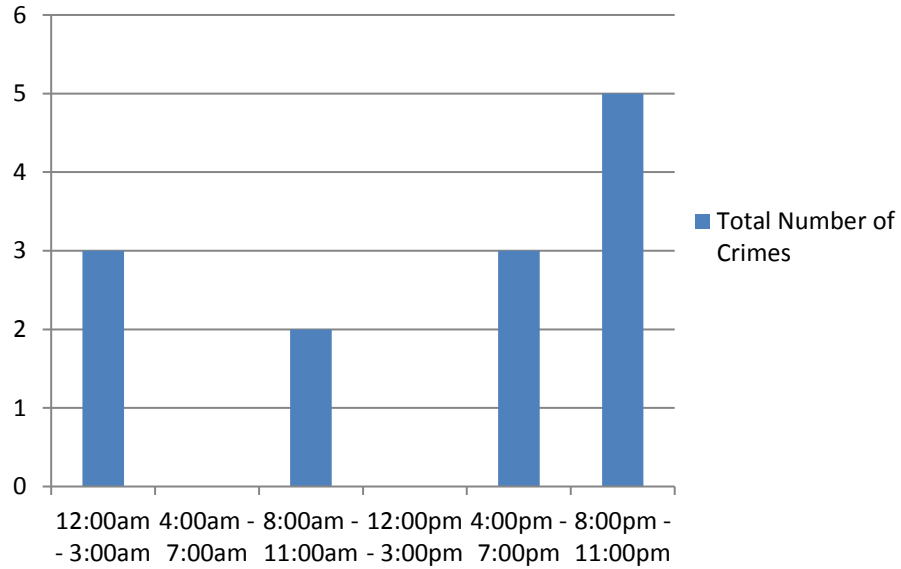
Crime by Day and Category

FPSE Crime by Category and Day - July 2018



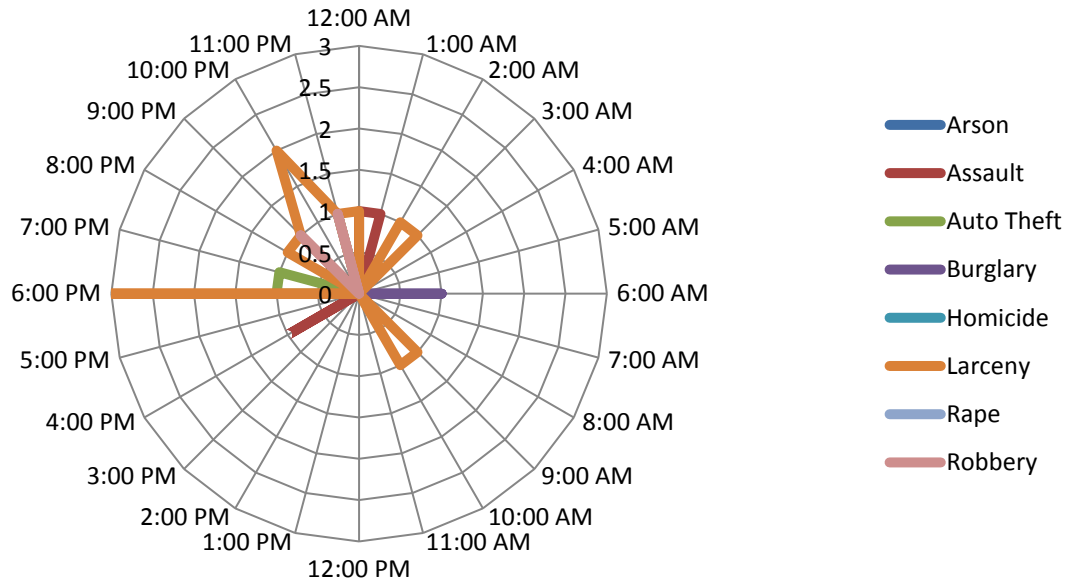
Forest Park Southeast—July 2018

Larcenies by Time of Day



Crime by Category and Time of Day

FPSE Crime by Category and Time of Day - July 2018



Forest Park Southeast—July 2018

Map of All Crimes in FPSE, July 2018



Disclaimer:

All crime data comes directly from the St. Louis Metropolitan Police Department. Some crimes are reclassified or reported at a later date.